

Like to join us?

If you are not sure about joining, we are always pleased to welcome visitors to our meetings. So why not come along and get to know us first?

Keeping in touch

We produce two Newsletters a year for members as well as an Annual Report summarising the activities of the past year. At Indoor Meetings members are encouraged to describe any particularly interesting wildlife events they have seen.



Haslemere Natural History Society

Otherwise just fill in the form on the other side of this sheet and send it with your subscription to:

Haslemere Natural History Society
Haslemere Educational Museum
High Street
Haslemere GU27 2LA

Our annual subscription is £8 single, £12 joint or family and only £2 for junior members aged 14 years or less.

Membership is renewable in January each year (but newcomers joining after September are not required to renew until the following year-end.)

The Society's website is updated frequently with local sightings, HNHS news, and links to other useful websites. It also has a fine selection of photographs and a Stop Press page.

You can e-mail us at hnhs@talk21.com. Do let us have those interesting or unusual sightings.

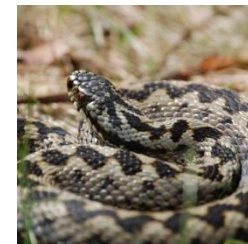
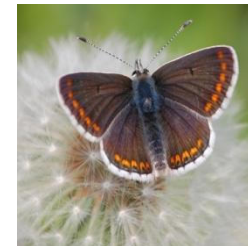
Our Annual General Meeting gives members the opportunity to contribute to the workings of the Society.

Haslemere Natural History Society
Haslemere Educational Museum
High Street
Haslemere GU27 2LA

www.haslemerenaturalhistorysociety.org.uk

E-mail: hnhs@talk21.com

*Join us, and be
amazed by what's on
your doorstep*



Why this area?

We are fortunate to live in one of the most beautiful parts of England. The surrounding woodland, heaths and meadows are home to an exceptional number of wild creatures and plants. Much of this goes unseen as we pursue our daily lives, but the wonderful variety of life around us can be appreciated by knowing where to look, and when.

Who are we?

The Haslemere Natural History Society helps local people see and learn about our wildlife heritage by organising field trips and indoor meetings led by friendly specialists. The Society's enthusiasms are broadly based, which ensures a wide range of interests are covered each year.

Whether it's birds, mammals, wild flowers or insect life that interests you, or you just love the surrounding countryside, we're sure to have something for you.

What do we do?

Nature rambles and field trips

We organise a series of field meetings throughout the year. Our bird watching rambles are always popular, particularly in winter when little other wildlife is to be seen.

Spring usually brings the first of our wild flower walks, which continue until autumn when we run the very popular Fungus Foray.

Summer is ideal for seeing many species which do not appear in the colder months.

Bat watch evenings and butterfly walks always go down well with members, and visits to local Nature Reserves appeal to a range of tastes.

Lizards, dragonflies, glow-worms and a wealth of other creatures and plants may be seen on these walks, and specialist members can usually help with identification.

Indoor meetings

Several indoor meetings are organised by the Society each year. They are held in Haslemere Educational Museum on Saturday afternoons.

Expert speakers are invited to provide lively and colourfully illustrated talks on wildlife or environmental themes.

I would like to join the Haslemere Natural History Society

Name: _____

Address: _____

*Tel: _____

*E-mail: _____
* This information is optional

I enclose my subscription for the following membership (please tick as appropriate):

£8 single

£12 joint (one copy of mailings)

£12 family (one copy of mailings)

£2 junior members (under 15)

How did you hear about us? (E.g. friend/flyer)

Signed: _____

Date: _____

We prefer payment by cheque, annual standing order or electronic transfer, payable to "Haslemere Natural History Society". Cash is sent at your own risk. Please send this form and your subscription to the address overleaf.

Your details will be held on computer solely for administrative use by the Society.